



i3CONNECT Cactus

PRO DISPLAY, MADE INTUITIVE.

Meet our very first non-touch display: the i3CONNECT Cactus! Built on the same values as our renowned touchscreen portfolio, the Cactus offers stunning visuals, crisp audio and delivers the exact same experience our users have grown accustomed to.



QD-mini LED technology

Bring the cinema to your meeting room.



Local dimming

Darker blacks, lighter whites and less power consumption.



i3CONNECT Studio

The same easy-to-use experience as our other displays.



Remote management

Easily access all settings remotely through i3CONNECT Cortex.



Dolby Atmos certified

Clear 50W audio certified by the experts at Dolby.



Android 14

Supported Android keeps your device safe and secure.

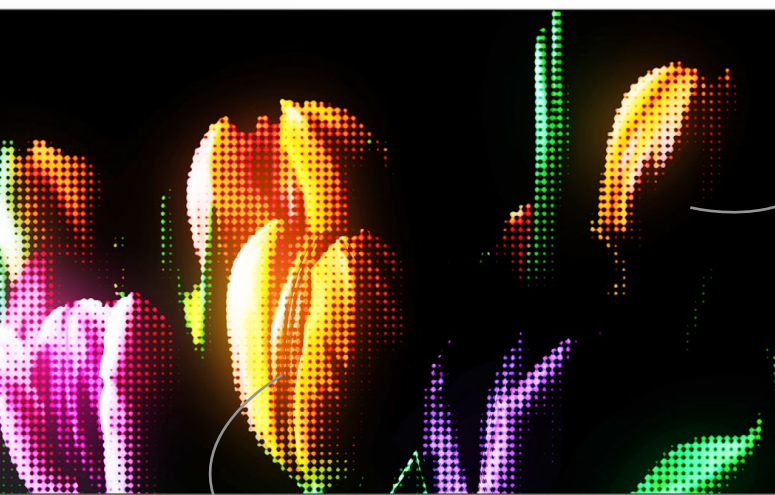


BRING YOUR SUNGLASSES.

Cactus boasts QD-Mini LED technology, providing the best visuals in the market. Think deeper blacks, vibrant colours and high brightness. Your presentation, video or graphic has never looked better or clearer.

NONE OF THE TOUCH, ALL OF THE CLASS.

If you have ever worked with an i3CONNECT display, you will feel right at home with the Cactus. This is because of our in-house developed i3CONNECT Studio user experience. Simply walk up to the screen, use the remote control to select the option you need and you can kick off your meeting right away.



DIMMING IS WINNING

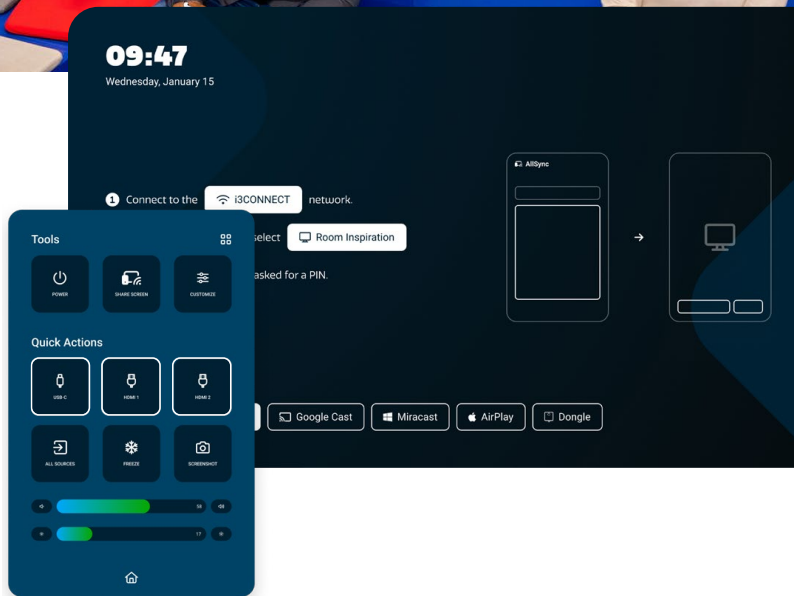
Just like the i3CONNECT Aspen 4, Cactus uses local dimming. This turns off parts of the screen that are displaying dark colours, because why would you waste energy to produce a colour the display already is? Up to 420 separate zones can be turned off.



SHARING IS CARING

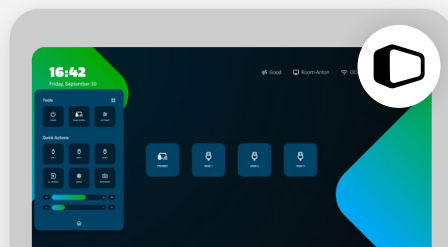
Your device is the heart of your meeting, and you choose how to connect it. If you would like to go the wireless way, Cactus comes with our AllSync solution, allowing you to share from any device, be it Windows, Android, Apple or Chrome.

Would you like to go the wired way instead? Pick any of the 4 HDMI ports or connect to the side USB-C port and you are good to go!



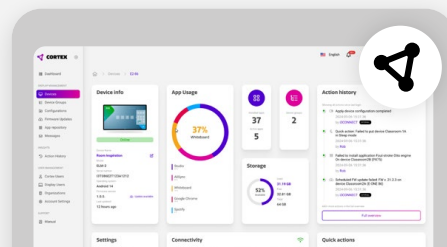
INCLUDES ALL THE SOFTWARE YOU NEED

All i3CONNECT software is developed in-house in our Benelux offices, ensuring a safe and easy to use experience that just works.



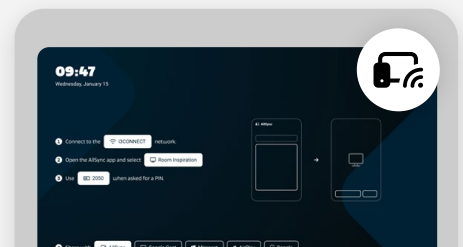
i3CONNECT Studio

A fully customisable interface that is extremely easy to use, even by remote control.



i3CONNECT Cortex

Our tool for remote management allowing IT admins full access to all devices.



i3CONNECT AllSync

Our software for easy wireless sharing that is compatible with Windows, Android, MacOS, iOS, and ChromeOS.

DISPLAY PROPERTIES	65"	75"	85"
Model	C1 – 65	C1 - 75	C1 - 85
Series	i3CONNECT CACTUS		
Product ID	10010951	10010952	10010953

DISPLAY SPECIFICATIONS			
Display Technology	Q-LED Liquid Crystal Display (LCD)		
Backlight technology	QD-Mini LED (Direct LED)		
Dyn. Backlight Multi-zones	242	312	420
DC dimming (for Flicker Free)	Yes		
Panel size	65"	75"	85"
Display aspect ratio	16:9		
Native resolution	3840 x 2160 Pixels - 4K Ultra High Definition		
Brightness	550 cd/m ²		
Contrast ratio (Static)	10000:1		
Contrast ratio (Dynamic)	100000:1		
Viewing angle	178° / 178°		
Color depth	1.07 billion colors (10 bit)		
Color Gamut	DCI-P3 92%		
Eye fatigue	Eye Protection		
Response time (typical)	< 8 ms		
Refresh rate	60 Hz (65" & 75"), 120Hz (85")		
Surface	Anti Glare, 25% Haze		
Supported orientation	Landscape		
Lifetime	50.000 hours (16/7)		

CONNECTIVITY	
Video & audio input	4x HDMI 2.0 (Side)
Audio output	1x SPDIF (COAX)
Sensors	Ambient Light Sensor
USB ports (data only)	1x USB-C (Side) 1x USB 3.0 Type A (Side) 2x USB 2.0 Type A (Side, 1x Data + 1x RS232)
Network connectivity	1x LAN: RJ-45 connector 1x RS232 (USB-A 2.0) Wi-Fi 6 (IEEE 802.11ax/ac/n/a/g/b)

OPERATIONAL SPECIFICATIONS	
Operating system	Android 14
Memory	4 GB RAM – 64 GB storage
CPU	ARM Cortex-A73*4 (4 cores)
GPU	ARM Mali G52 MC1
Loudspeakers	2 x 15 Watt + 20 Watt Subwoofer, Dolby Atmos certified

ACCESSORIES	
Included	Quick start guide & Welcome Letter
	Power cable 2m (EU)
	Remote control
	2x Battery

PHYSICAL PROPERTIES	65"	75"	85"
VESA mounting pattern	300 x 300 mm	300 x 300 mm	600 x 400 mm
Net weight	~17kg	~23kg	~32kg
Packaged weight	~24kg	~33kg	~49kg
Dimensions	~1448*62*835mm	~1671*63*952mm	~1893*64*1089mm
Packaging dimensions	~1608*145*1000mm	~1850*164*1125mm	~2060*190*1260mm

ELECTRICAL PROPERTIES	65"	75"	85"
Input power	100 ~ 240 Volt – 50/60 Hz		
Energy saving features	Auto-brightness adjustment using Ambient Light Sensor, Local Backlight Dimming		
Power consumption (ES8.0)	TBD	TBD	TBD

SOFTWARE FEATURES	
User interface	i3CONNECT STUDIO
Screen casting software	i3CONNECT AllSync wireless presenting
App store	i3CONNECT Store
Update Support	OTA
Device Management	i3CONNECT Cortex

REGULATORY INFORMATION

Type approval	CE, EMC, CB, RED-DA, REACH, RoHS, Energy Star 8.0, Dolby Atmos
----------------------	--

ENVIRONMENTAL CONDITIONS

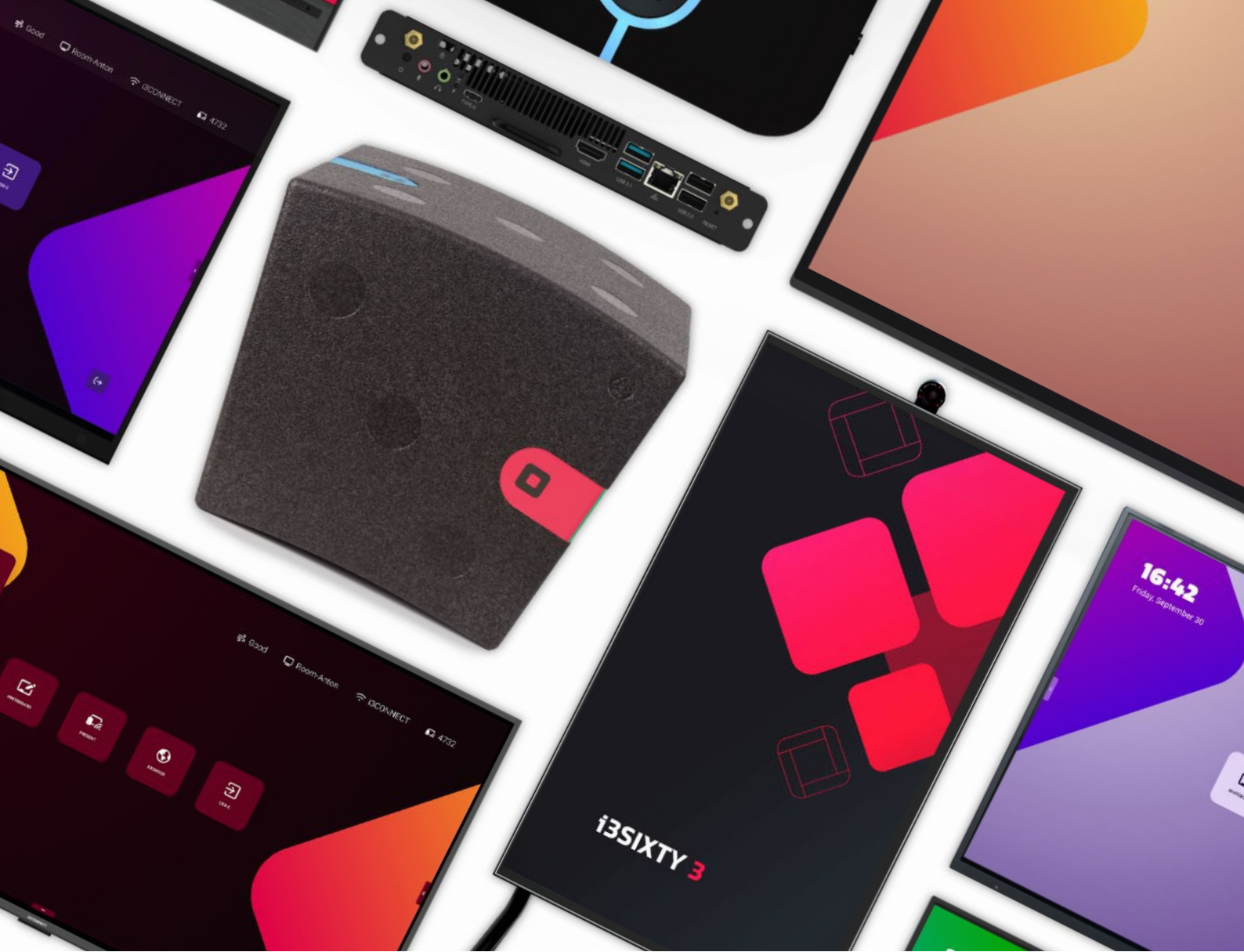
Operating temperature	0°C ~ 35°C
Operating humidity	10% ~ 90% RH non-condensing
Operating maximal altitude	5 000 meters
Storage temperature	-20°C ~ 60°C
Storage humidity	10% ~ 90% RH non-condensing

WARRANTY

Standard warranty	5 years from shipment
--------------------------	-----------------------

NOTICE

Exclusive design by i3CONNECT - subject to change.



READY FOR NO FUSS THANKS TO THE i3CONNECT CACTUS?

LET'S CONNECT

i3CONNECT HQ
Kleine Schaluinweg 7
3290 Diest, BELGIUM.
info@i3-connect.com
www.i3-connect.com

CONTACT US

Ready for the next step? Go ahead: click that big button, fill in the form and we'll get in touch with you for a demo.