





## PROGRESS BEGINS WITH PURPOSE

### A statement from our CEO

Progress begins with purpose. Our purpose has remained clear for nearly sixty years: helping people learn, collaborate and share ideas more effectively.

Our journey began in the 1960s, when my father founded the company that laid the foundation for where we are today. What started with classroom furniture and chalkboards grew into a broader mission to support education and collaboration through innovation.

That spirit continues to guide us. In 2025, we reached an important milestone: we have established a new environmental baseline for i3CONNECT. For the first time, we are measuring the impact of our organisation across a full reporting year. This gives us a better understanding of where we stand today, helping us to clearly define actions that support our ambitions and targets for the years ahead.



**Gert van Erum**  
CEO & Founder i3CONNECT

### Progress with responsibility: a statement from our Sustainability Officer

Sustainability is not separate from our business. It shapes how we innovate, how we work with partners and how we prepare for the future. As technology plays an ever so greater role in learning and collaboration, we recognise our responsibility to ensure progress also contributes to a more sustainable world.

This report reflects where we stand today, but also where we want to go next. Building on decades of experience, we remain committed to innovation with purpose and progress with responsibility. I am proud of the progress we have made so far, and even more motivated by the journey ahead as we continue to turn ambition into meaningful action.



**Mariëlle Salh**  
Sustainability Officer i3CONNECT



# INDEX

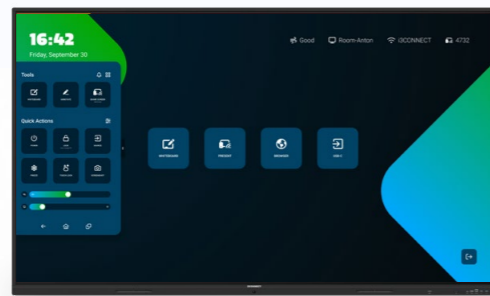
| CHAPTER   | PAGE      |
|---|-----------|
| <b>Our 2025 timeline</b>                              | <b>6</b>  |
| <b>Caring for our planet (environmental)</b>          | <b>8</b>  |
| Our targets   | 8         |
| Our impact in 2025                                    | 9         |
| From insight to impact: our focus                     | 10        |
| <b>Caring for our people &amp; community (social)</b> | <b>16</b> |
| i3CONNECT social highlights                           | 17        |
| Responsible supply chain                              | 17        |
| Learning without barriers                             | 18        |
| <b>Caring for your security (governance)</b>          | <b>22</b> |
| Security by design                                    | 22        |
| Privacy by design                                     | 25        |
| Labels & certifications                               | 26        |



# OUR 2025 TIMELINE

## January

i3-Technologies launches 'i3CONNECT' brand at ISE in Barcelona

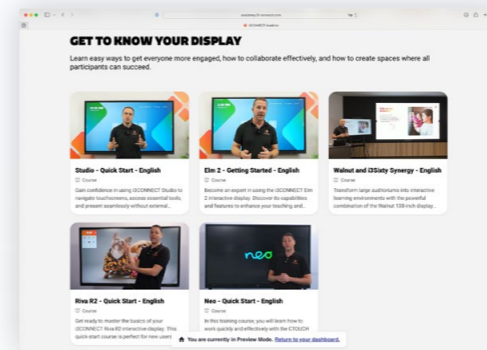


## May

Elm 2  
Studio

## September

New Website  
Academy  
Sustainability Passport, one-pager  
AllSync Receiver



## November

Aspen 4 MTR bundle



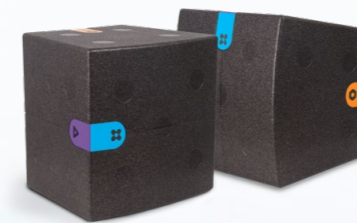
## April

Sustainability Report 2024  
Lift 3, Mount 2, Stand 2  
OPS  
AllSync Transmitter



## June

Cortex  
Walnut W1  
EcoVadis Gold Medal



## October

Aspen 4  
Motion 2

## December

Christmas parties in  
Diest and Eindhoven



# CARING FOR OUR PLANET

## A new environmental starting point

In 2025, we established a new CO<sub>2</sub> baseline for i3CONNECT. For the very first time, we measured our full impact as one organisation. Now that we have a clear picture of what we're dealing with, it's time to get to work.

## Our targets

Net zero in 2050 is the end goal, in line with the Paris Agreement. However, 2050 is a bit far away, isn't it? That's why we've established interim targets and a rolling 1 + 3-year sustainability planning cycle, using 2025 as the benchmark year.

## Our impact in 2025

| TOTAL GROSS EMISSIONS           | 2025 (BENCHMARK YEAR)             |
|---------------------------------|-----------------------------------|
| Scope 1                         | 14.60 tCO <sub>2</sub> e          |
| Scope 2                         | 15.57 tCO <sub>2</sub> e          |
| Scope 3                         | 51,035.72 tCO <sub>2</sub> e      |
| <b>Total (tCO<sub>2</sub>e)</b> | <b>51,065.89 tCO<sub>2</sub>e</b> |

| TOTAL GROSS EMISSIONS                                  | 2025 (BENCHMARK YEAR)             |
|--|-----------------------------------|
| Downstream Scope 3 GHG emissions                       | 34,658.56 tCO <sub>2</sub> e      |
| Upstream Scope 3 GHG emissions                         | 16,377.16 tCO <sub>2</sub> e      |
| <b>Total Scope 3 GHG emissions (tCO<sub>2</sub>eq)</b> | <b>51,035.72 tCO<sub>2</sub>e</b> |

Targets for 2026 - 2029

CO<sub>2</sub> EMISSIONS  
**NEAR ZERO**  
SCOPE 1 & 2

new targets TBD

CO<sub>2</sub> EMISSIONS  
**-16%**  
SCOPE 3

Ultimate goal

CO<sub>2</sub> EMISSIONS  
**NET ZERO**  
IN 2050

**Understanding scope 1, 2 and 3 emissions**

**Scope 1**

Direct emissions that result from sources that are owned or controlled by the organisation.

**Scope 2**

Indirect emissions from purchased energy and heat.

**Scope 3**

All other indirect emissions that occur in the value chain, including raw material extraction, manufacturing, transportation, product use and end-of-life.





## From insight to impact: our focus

### Our offices in 2025



#### Solar powered head office

Our offices use green energy and / or renewable energy from solar panels. In 2025, our offices consumed nearly 89,000 kWh of renewable energy.



#### Getting to work

In 2025, more than half of our employees already commuted using lower-emission transport options such as electric vehicles, public transport, cycling or walking.



#### Reduce & recycle waste

We separate waste streams to improve recycling and waste management. One thing we're not reducing: office coffee consumption.



#### Smart energy use

Motion sensors automatically switch off lights and displays when rooms are empty, while LED lighting helps keep energy consumption low.

Scope 1 and Scope 2 emissions represented less than 0.1% of our total footprint in 2025. That means that almost all of our impact sits in Scope 3 emissions. Of course, improvements in our own operations remain important. But we focus on where we can make the most significant impact: by improving our products via sustainability by design.



## Sustainability by design: our 2025 achievements

Reducing impact starts with how we design our products. In 2025, we set requirements and worked closely with our suppliers, resulting in the launch of the i3CONNECT Elm 2 and Aspen 4. Our approach contributes to SDG 9: Industry, Innovation & Infrastructure and to SDG 12: responsible consumption and production.

#### Green energy during manufacturing

We actively worked with our suppliers to reduce emissions during production. This includes increasing the use of renewable energy and improving energy efficiency in manufacturing processes.

#### Material use

We continuously optimise our products and packaging to use fewer materials, improve recyclability and limit the use of harmful substances.

- ❖ Aspen 4 and Elm 2 are manufactured with about 10% green energy. This key insight helps shape future product design!
- ❖ Elm 2 is up to 10% lighter than its predecessors
- ❖ Aspen 4 is up to 24% lighter than its predecessors



The Aspen 4's packaging carries the FSC® MIX label. If packaging is FSC® certified, that means it meets a global standard that ensures materials come from responsibly managed forests, recycled sources or other controlled origins.





## Energy-efficiency

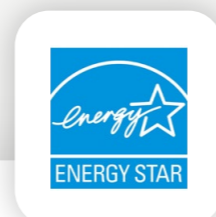
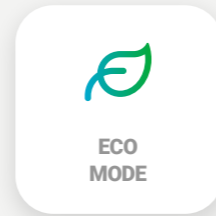
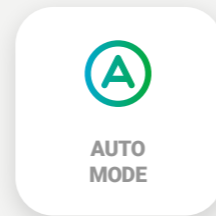
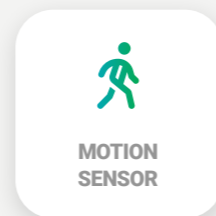
A large part of a product’s environmental impact occurs during its use phase. That’s why improving energy efficiency is a key focus in our design process.

In 2023, we experimented with the “Green Screen”: a concept touchscreen designed around sustainability-first choices. One of those choices? Dynamic backlighting, which helped shape the Aspen 4.

### Aspen 4: reducing energy where it matters

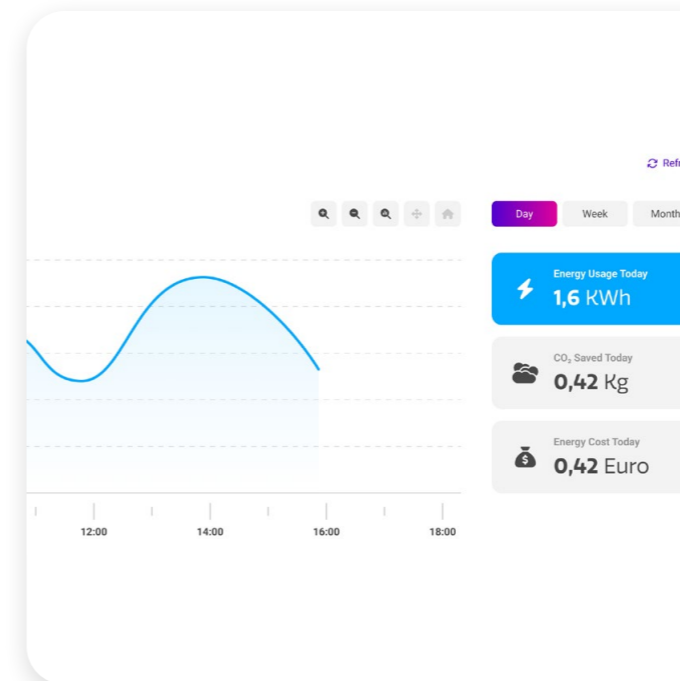
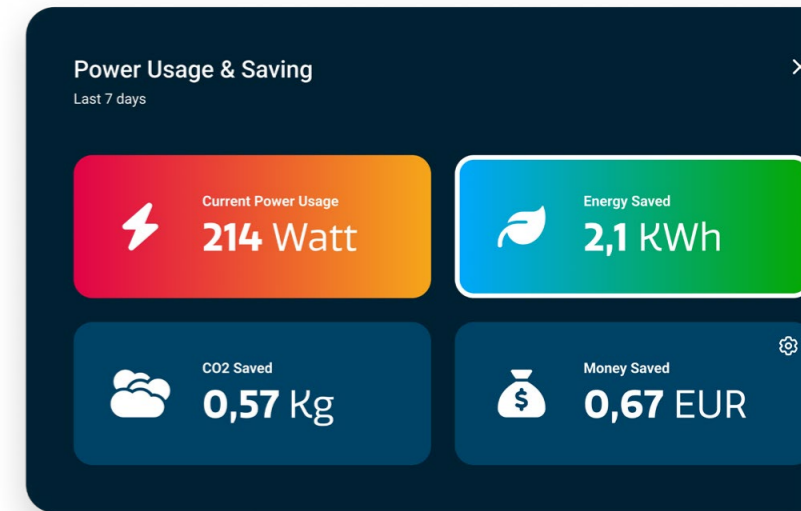
Our whiteboard app is the most used feature on our touchscreens, with dark mode (blackboard) gaining popularity. This insight guided the design of the Aspen 4.

In close collaboration with our supplier, we introduced local dimming technology and set the blackboard as the default mode. By dividing the backlight into 286 zones that only illuminate when needed, power consumption can drop from 210W in whiteboard mode to just 86W in blackboard mode!



## Energy monitoring widget

To make this impact visible & tangible, Aspen 4 includes a **built-in energy monitoring widget**. It tracks energy consumption over the past 7 days and allows users to calculate costs based on their own energy price.



## Monitor energy consumption through Cortex

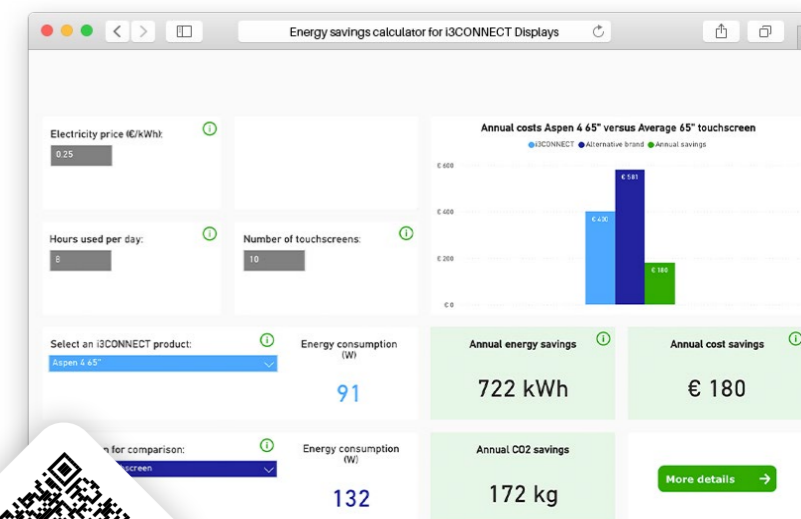
Through Cortex, our remote management platform, user can also monitor energy consumption over longer periods, with real-time insights per day, week or month.

Now that’s insightful!

## Energy savings calculator

Select the touchscreen you wish to compare, put in your electricity price, amount of hours you expect to use the touchscreens + the amount of touchscreens = watts and watts of savings!

➔ [bit.ly/i3c-energy-calculator](https://bit.ly/i3c-energy-calculator)



Both the Aspen 4 and the Elm 2 are Energy Star certified and compliant with the EU Ecodesign Directive.



Sustainability passport in one-pager format of the Elm 2



## Lifecycle assessments

Knowledge is power. We use Life Cycle Assessments (LCAs) to understand the environmental impact of our products across their full lifecycle. These insights help us identify where improvements can be made and support data-driven decisions in product development.

Our LCAs are conducted in accordance with ISO 14040 and ISO 14044 and follow the Product Category Rules (PCR) for Electronic and Electrical Equipment. They are carried out by an independent third party to ensure transparency and reliability.

The results of the LCA are published in two different Sustainability Passport formats:

- ❖ **Self-declared Environmental Product Declaration (EPD).** A comprehensive report that presents the full environmental profile of the product
- ❖ **One-pager.** A visual summary of the product's carbon footprint, showing CO2 impact per lifecycle stage in clear numbers and charts.

In 2025, we published these for the Elm 2 and Aspen 4 – both for the very first time!



## DID YOU KNOW...

You can find our products' sustainability passports on our support portal? Scan the QR-code to discover the documents for the i3CONNECT Aspen 4 and the i3CONNECT Elm 2.



# CARING FOR OUR PEOPLE & COMMUNITY

We are committed to creating a workplace where employees feel supported, valued and empowered to thrive.

 **Healthy lunch**

 **Bike lease**

 **Employee training**

 **Flexible working arrangements**

## Responsible supply chain

Our values extend to our supply chain. We work closely with our key suppliers and require them to adhere to our Supplier Code of Conduct, which covers topics such as labour conditions, human rights and environmental responsibility.

## Some fun events we did

### T-Tournament @ Eindhoven

We participated in T-Tournament for the first time as i3CONNECT! We didn't win, but we sure had lots of fun. T-Tournament is a summer sports tournament, organised by our Eindhoven office park Strijp-TQ. Over 80 teams participated in 2025!

### i3CONNECT Sales Days @ Diest

We brought our teams together during the i3CONNECT Sales Days at our Diest headquarters. For many, it was a welcome change from Microsoft Teams to real-life conversations. Over two inspiring days, 57 colleagues from 13 countries joined 22 sessions packed with insights, strategy and collaboration. We shared knowledge, aligned on our goals – and yes, enjoyed quite a few kilos of Belgian fries along the way.

*Our i3CONNECTORS from all over the world, together at the sales days*



## DID YOU KNOW...

Our offices are filled with our own touchscreens, supporting our daily work. But they're not just for business. In 2025, they also brought us together for pub quizzes, music, train journey videos and even the occasional movie night!



## Learning without barriers

We strongly, deeply, firmly believe technology should make learning easier, more accessible and more engaging.

Guided by SDG 4: Quality Education, we make sure that our solutions support teachers, students and school staff every moment of the day.

### i3CONNECT Studio

A fully customisable software suite that is extremely easy to use. And free to use, too!

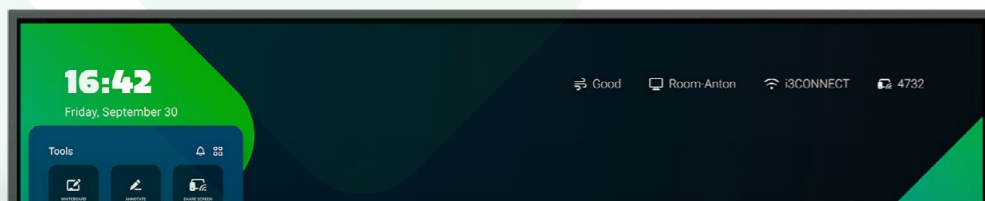
### i3CONNECT Whiteboard

Whiteboard, with blackboard mode. Start whiteboarding with the click of a button and brainstorm endlessly on your infinite canvas. Use images and objects to tell your story and then save and send your notes to your team or classroom.

### i3CONNECT AllSync

Present with confidence. Cast your presentation using the integrated i3CONNECT AllSync, compatible with any popular device on the market.

Our user interface, including the home screen tiles, side menu and settings menu, is designed with accessibility in mind and aligned with WCAG 2.1 AAA standards, supporting inclusive learning environments.



## DID YOU KNOW...

i3CONNECT Studio has six themes, including high-contrast themes for better readability.





### **Google EDLA-certified**

Both Aspen 4 and Elm 2 are Google EDLA certified and optimised to use in Google-based classrooms.

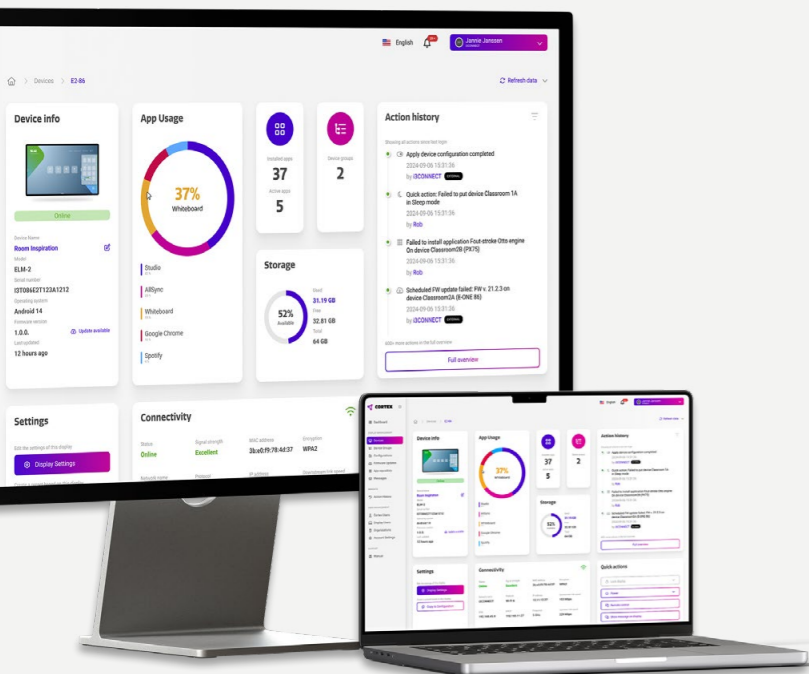
With full access to the Google Play Store, teachers can use their preferred apps and tools, creating flexible and future-ready learning environments that support SDG 4.



### **Sharing is caring**

In 2025, we shared a series of articles by **education expert Dr. John Collick** on our website. In 'Let's Talk About Education' he explores key trends in digital learning and the future of education, offering fresh perspectives that spark ideas and conversation across the industry.

- [Giving up Thinking: AI and Essay Writing and Marking | i3CONNECT](#)
- [The Learning Mind: Fear, Failure and the Number Line | i3CONNECT](#)



### **Remote IT heroes**

With Cortex, IT teams can remotely manage, update, and troubleshoot displays across the entire organisation.

This reduces downtime in classrooms and ensures that lessons can continue without unnecessary interruptions.

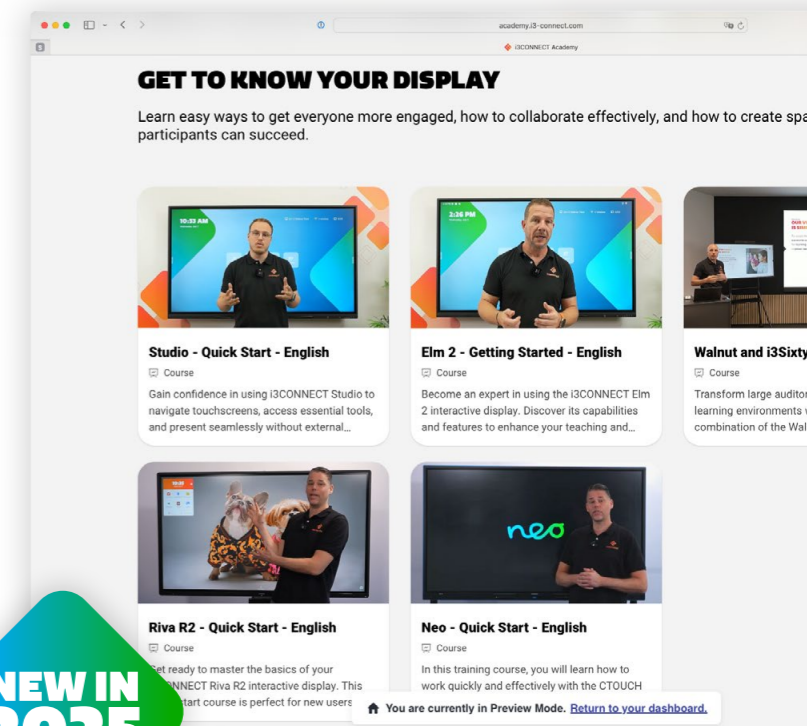
Issue? Cortex. Click.  
Lesson saved. Phew!

### **i3CONNECT Academy**

Adopting new technology can be intimidating. That's why we introduced i3CONNECT Academy: our free online learning platform.

At [academy.i3-connect.com](https://academy.i3-connect.com) you'll find practical training, easy-to-follow courses and step-by-step guides. i3CONNECT Academy makes it simple to gain confidence with the technology and unlock your trusty interactive's display full potential!

➤ [academy.i3-connect.com](https://academy.i3-connect.com)





# CARING FOR YOUR SECURITY

Through strong governance, data protection and ethical business practices, we aim to contribute to SDG 16: Peace, Justice and Strong Institutions.



### Code of conduct

Clear principles and guidelines that help ensure ethical, respectful and responsible business practices across our organisation.



### Whistleblower protection

Safe and confidential channels that allow concerns or misconduct to be reported without fear of retaliation.



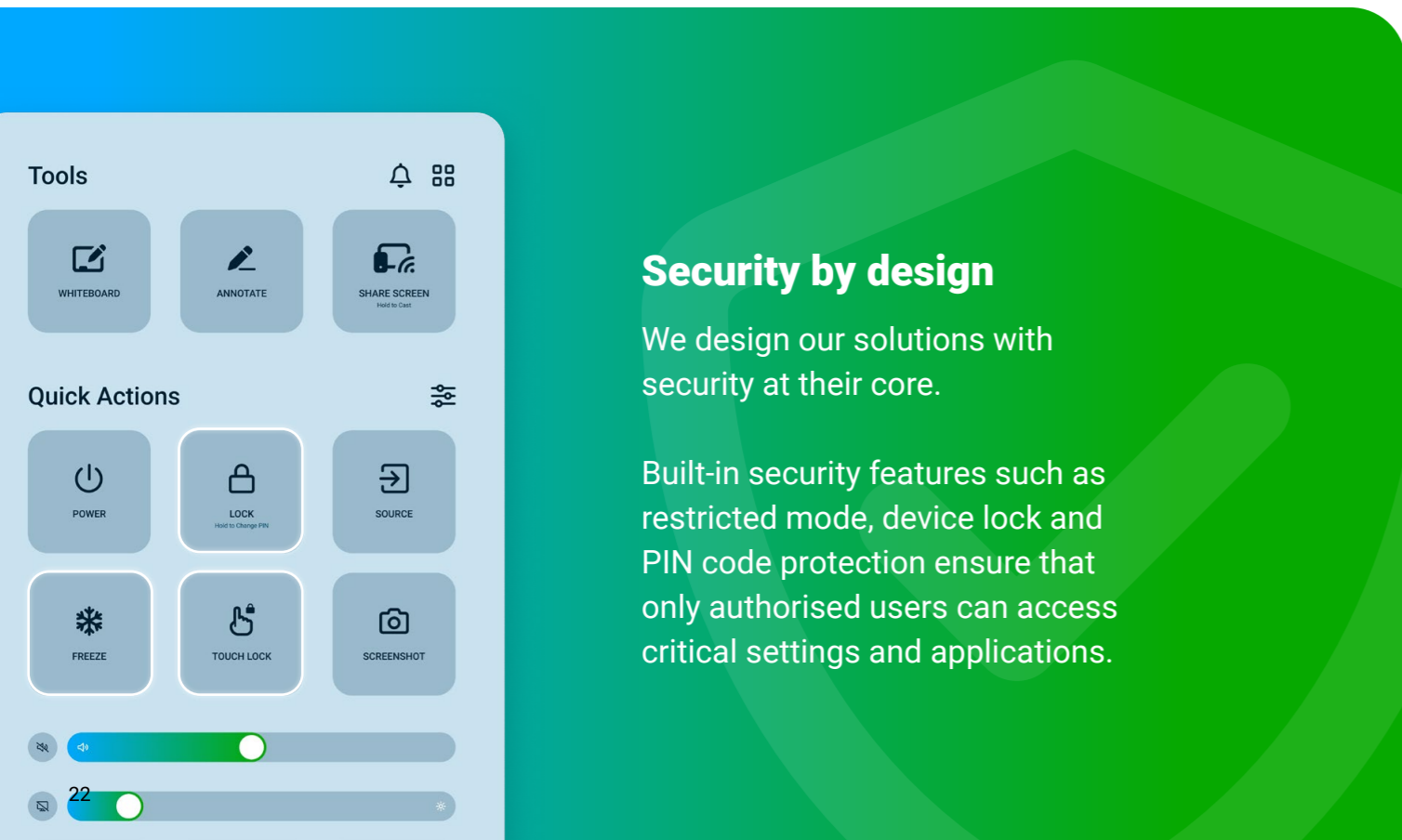
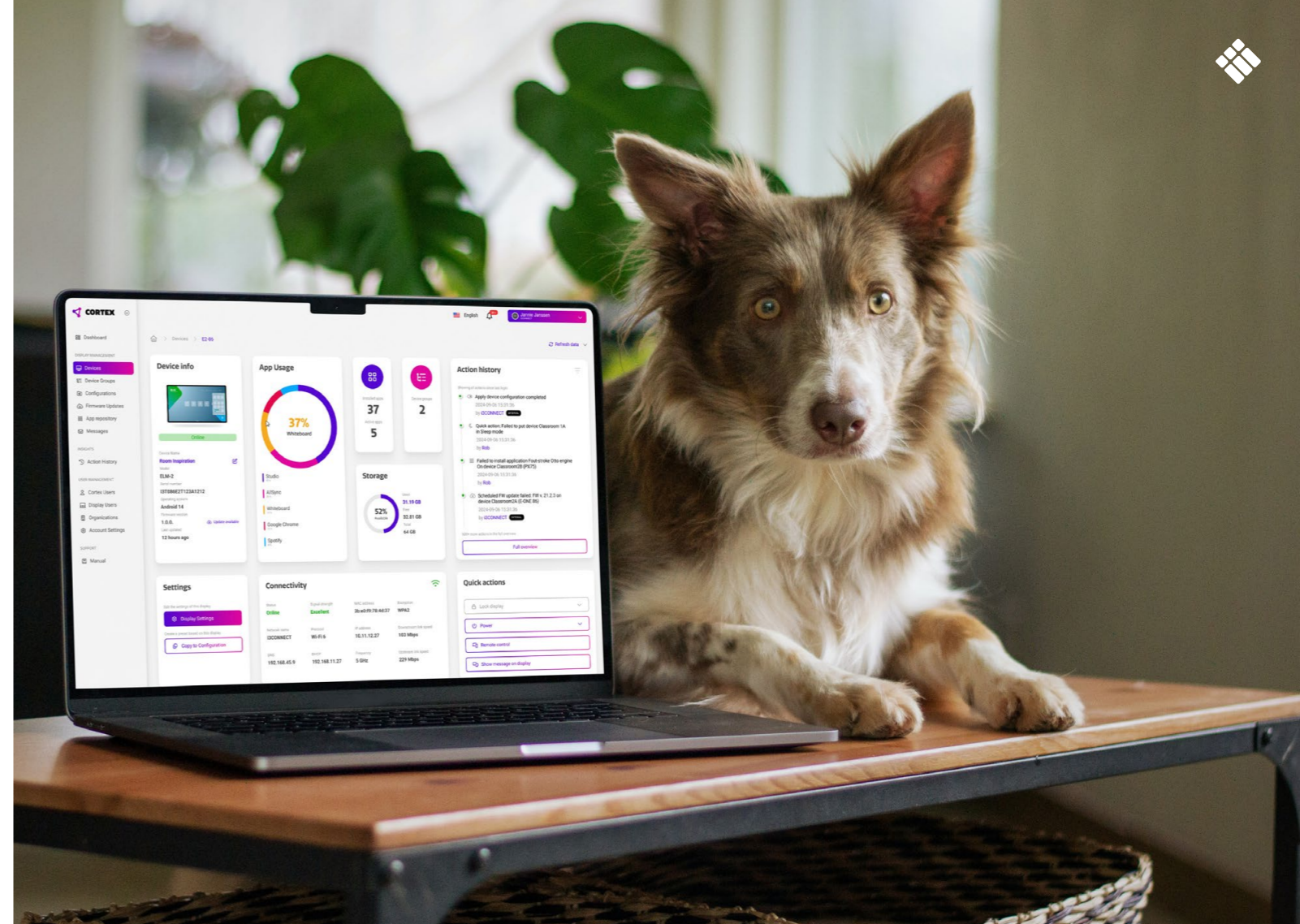
### Confidential advisors

Trusted points of contact available to support employees with confidential guidance and advice when needed.



### Security incident reporting channels

Dedicated channels that enable security incidents and vulnerabilities to be reported, assessed and addressed quickly and responsibly.



## Security by design

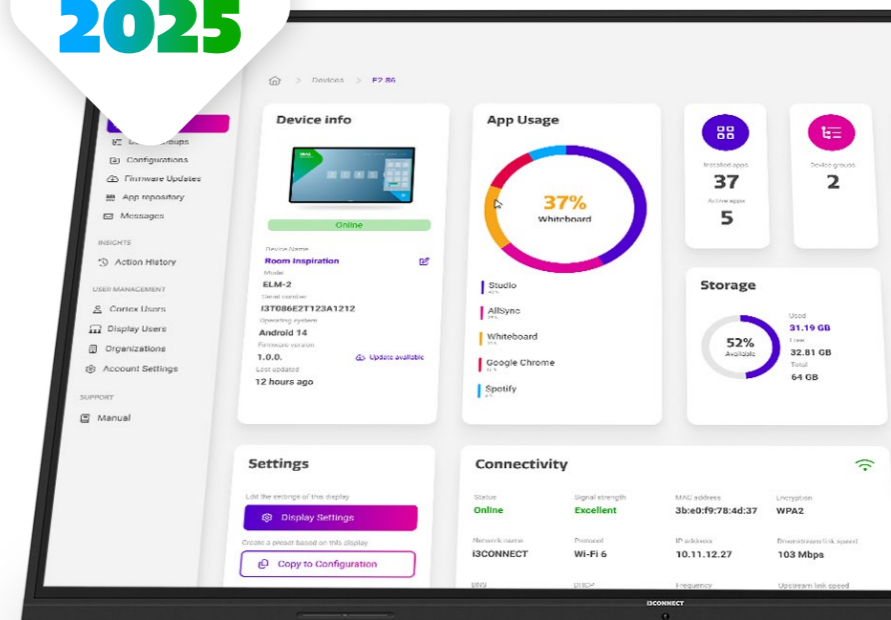
We design our solutions with security at their core.

Built-in security features such as restricted mode, device lock and PIN code protection ensure that only authorised users can access critical settings and applications.

### Intuitive remote management

With i3CONNECT Cortex, displays can be managed, monitored and controlled remotely. Settings, updates and access controls can be applied across entire fleets from any location, while usage, activity and configuration history provide full visibility and oversight.

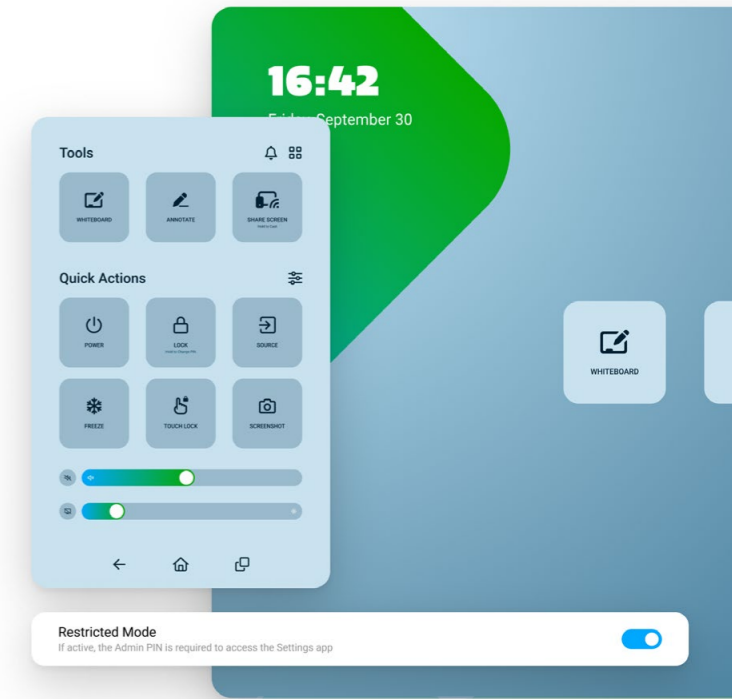
Additional controls, such as managing sharing settings remotely, allow organisations to maintain secure and consistent environments across all devices.





### Restricted mode makes your i3CONNECT Studio experience airtight

- ❖ Users can only access the home screen tiles and the first 'layer' of the side menu. All other items, such as the apps tray, side menu settings, or full settings are not accessible.
- ❖ If for some reason, a user manages to open an unauthorised app, Studio will automatically and immediately kill the app. Fool-proof and air-tight. We call this the 'whitelist' mechanism.
- ❖ You can add an extra layer of restriction by disabling certain buttons in the side menu via the admin settings.



### Privacy by design

We take data protection seriously and design our solutions to safeguard user data at every level. **All our proprietary software is developed in-house in Belgium and the Netherlands.**

i3CONNECT Cortex is built with secure authentication, role-based access control and encrypted communication as standard. Data is processed and stored within secure cloud environments in the EEA, ensuring compliance with strict data protection requirements. All data in transit is protected using modern encryption protocols (TLS 1.2 or higher), and access to systems is restricted to authorised users only.



You can also change i3CONNECT AllSync settings remotely from Cortex. This allows you to manage things like sharing protocols, PIN behaviour, and much more from the comfort of your desk.

# LABELS AND CERTIFICATIONS

## Company level



## Product level compliancy



### EcoVadis Gold Medal

In 2025, we earned the EcoVadis Gold Medal, placing us in the top 5% of companies assessed worldwide. With a score of 82/100 (98th percentile), our performance was recognised across four key areas: Environment, Ethics, Labour & Human Rights and Sustainable Procurement.

**NEW IN 2025**



## ENVIRONMENTAL OUR PRODUCT FOOTPRINT REDUCTION PROGRESS

In 2024, CTOUCH did not introduce new touchscreen models. Thus, we've not been able to reduce our product footprint. But! That is not to say we have not made any progress so far. We are proud to have achieved a **CO2 reduction of up to 37%** with our current touchscreen models compared to CTOUCH's benchmark models in 2019\*.

**UP TO 37%  
REDUCTION  
PRODUCT CO2  
FOOTPRINT**

### How do we monitor our product CO2 reduction?

We monitor our CO2 reduction by measuring the average CO2 emissions per touchscreen per functional year of life. This is also called emission intensity.

$$\text{Emission Intensity} = \frac{\text{Average CO2 emission, weighted by sales}}{\text{Functional lifetime}}$$



## OUR EMPLOYEE FOOTPRINT

**WORK & TRAVEL**  
We promote hybrid working, cycling to work and driving electric cars. When traveling abroad, we choose the most sustainable option possible.

**LIGHTING & HEAT**  
LED lamps and heat pumps provide light and heat for our beautiful office in the innovative Strip-T in Eindhoven, the Netherlands.

**INTERNAL TRAINING**  
At least twice a year, we provide training updates to our personnel on our sustainability progress and how each individual can contribute to our common sustainability goals.

**SOLAR POWERED HEADQUARTERS**  
CTOUCH's head office is solar powered. Almost 100,000 kWh of solar energy is fed back into the grid.

**SUSTAINABLE WORK TOOLS**  
Our employees use eco-friendly work tools such as Fairphone laptops, Fairphones and Fairphones.

**REDUCE & RECYCLE WASTE**  
Paper, plastic and general waste is collected in separate bins. Our goal is to shrink waste to zero.





## Hello there!

We're i3CONNECT: one of the world's leading names in large-format interactive displays and solutions for education and business. With almost 60 years of experience, we design intuitive products that help people connect, collaborate and learn with ease.

[www.i3-connect.com](http://www.i3-connect.com)